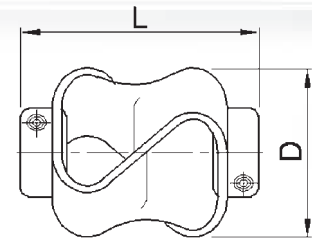
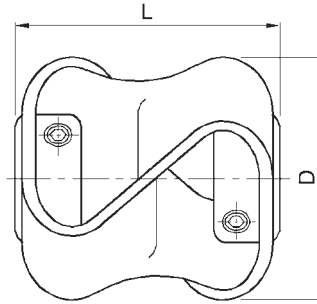
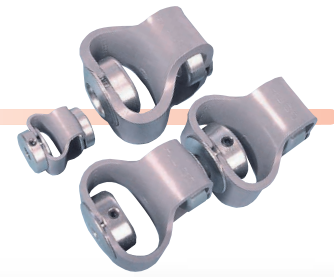


# Flex - P Double Loop Flexible Coupling



## DIMENSIONS & ORDER CODES

Size	steel zinc plated hubs	stainless steel hubs	Dimensions					Fasteners		
	Order Code		Max Diameter	Length L +/- 1.0	Bore length	Max Bores	Mass kg x 10-3	Size	Torque (Nm)	A/F (mm)
10	047.10	-	27	27	7.9	9.53	25	M3	0.94	1.5
	-	049.10							0.32	
20	047.20	-	48	48	12.7	12.7	92	M4	2.27	2.0
	-	049.20							2.0	
30	047.30	-	54	55	16.0	16.0	124	M5	4.62	2.5
	-	049.30							2.1	
40	047.40	-	56	56	16.0	16.0	136	M6	7.61	3.0
	-	049.40							3.75	
40*	-	050.40	56	56	16.0	16.0	136	M6	7.61	3.0

## PERFORMANCE

Size	Max Torque 1 (Nm)	Max Torque 2 (Nm)	max misalignment/displacement		
			Angular deg	Radial mm	Axial +/- mm
10	0.5	0.8	10	2.6	4.5
20	1.8	3	15	3.2	7.5
30	5	8	15	3.2	8.5
40	10	18	15	3.2	11
40*	2.5	4.5	15	3.2	11

Torque 1 = torque at maximum displacement  
 Torque 2 = torque at 1 deg. angular, 2mm axial and 0.5mm radial displacement

## Materials & Finishes

**Hubs:** Steel 230M07 pb Zn plated + clear passivate or  
 Stainless Steel 303 S31 natural finish  
**Flexing Element:** Hytrel  
**Fastener:** Steel Hub: Alloy steel, black oiled  
 Stainless Steel Hub: stainless steel

## Temperature Range

-40°C to +100°C

## Maximum Rotational Speed

3000 rev/min

## STANDARD BORES\*

Size	+0.05/-0mm																
	3	3.175	4	4.763	5	6	6.350	7.938	8	9.525	10	12	12.700	14	15	15.875	16
10	●	●	●	●	●	●	●	●	●	●	●						
20						●	●	●	●	●	●	●	●				
30										●	●	●	●	●	●	●	●
40										●	●	●	●	●	●	●	●
Bore Ref	14	16	18	19	20	22	24	27	28	31	32	35	36	38	40	41	42

\* Couplings with dissimilar bores are non-standard